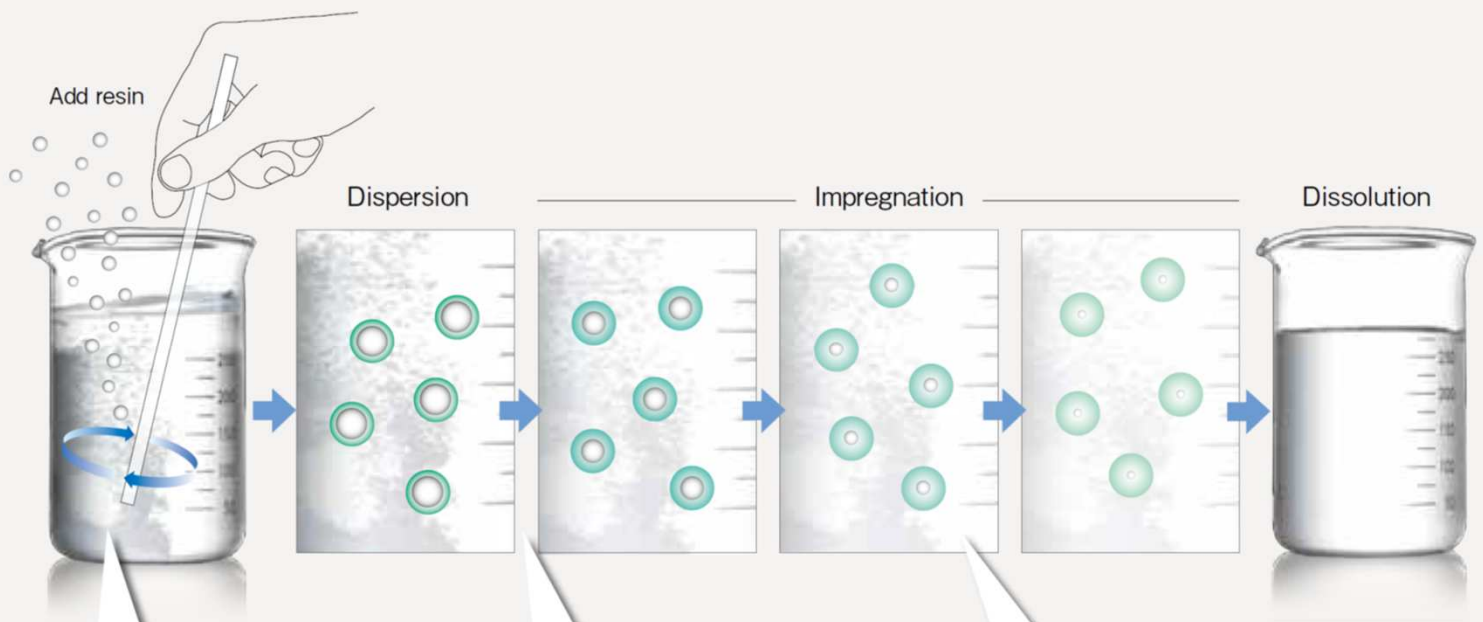


Dissolving method

S-LEC dissolves easier in a solvent when resin is added gradually while being stirred. Although S-LEC dissolves at room temperature, quicker dissolving can be achieved by heating. In that case, however, heating immediately after the addition of resin can result in the formation of blocks. Therefore, heat should be applied after the resin swells sufficiently. Also, pay heed to the volatilization of the solvent during heating.

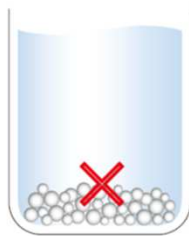
If a mixed solvent is used, first, let S-LEC swell sufficiently in a solvent in which S-LEC does not dissolve easily (such as an aromatic solvent, ester, ketone or chlorinated hydrocarbon), and then add an alcohol solvent to achieve a better dissolving effect.



Point 1
Disperse the resin uniformly.

1. Increase the stirring speed.
2. Reduce the resin pouring speed.
3. Lower the resin concentration.

Point 2
Do not let the resin precipitate.



Point 3
Increase the dissolving speed.

1. Increase the dissolving temperature.
2. Increase the stirring speed.
3. Increase the stirring efficiency.